

Model 910 Radiation scanner



- USB port
- α β γ ray switch selection
- Automatically stores data
- Data analysis software
- Real-time data transmission to computer

Radiation scanner Model 910 is an upgraded version of the original Model 900. In 2011 Coliy Technology GmbH redesigned the Radiation scanner Model 910 to make it easier to operate with a much higher reliability factor: Its buttons are simplified into 8, which makes the interface more user-friendly, its internal circuitry is optimized to be more reliable; its memory is expanded to stock more data.

The Radiation scanner Model 910 was designed to help recognize the risk of terrorist attack after the 9.11 incident. With its powerful functions it can be used under severe adverse conditions. Due to its resistances to high impact and high and low temperature it offers reliable and precise measurement data. The main body of the Radiation scanner 910 is small, light with a strong shell to protect it. It can detect α 、 β 、 γ and X-rays as described and adopted by the nuclear radiation sensor standards laid down by the American Bureau of Standards. It is a small sized radiation sensor with the best performance characteristics in the current market.

Applications

Radiation scanner Model 910 can be used widely in the fields of pharmaceutical factory, laboratory, power plants, quarries, emergency rescue stations, metal treatment plants,

underground oil fields, and oil pipeline equipment, environmental protection, police station etc. It is used for:

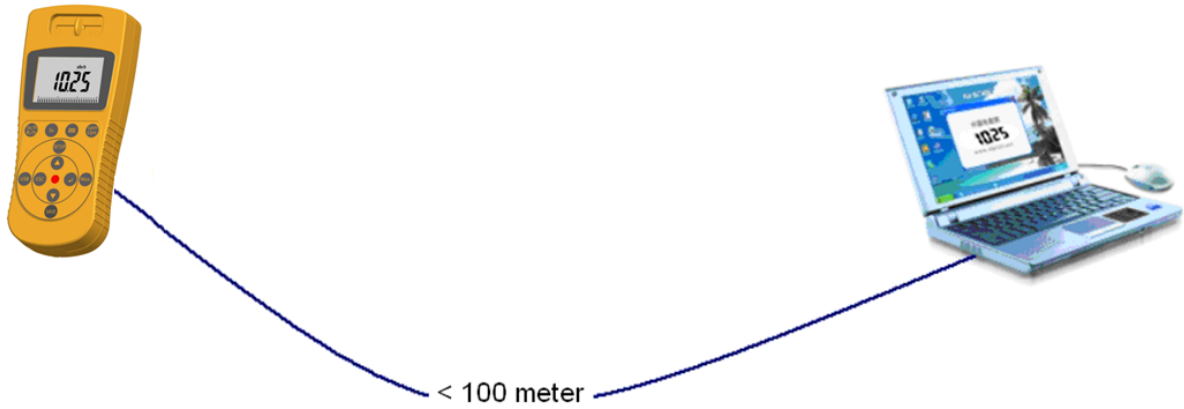
- Inspecting underground water radium pollution
- Inspecting radioactivity of underground drilling pipes and equipment
- Inspecting radon radiation and cesium pollution of surrounding environment
- Inspecting radioactivity of architecture materials such as stone etc
- Inspecting radioactivity of porcelain tableware and glass etc
- Inspecting local radiation leakage and nuclear radiation pollution
- Inspecting the danger of nuclear radiation in landfill and garbage dump
- Inspecting harmful radiation of personal precious property and jewelry
- Inspecting X-ray intensity of Medical and industrial X-ray instrument from

Features

- Ray selection switch
- Function of holding Maximum
- Displays the adjustable average time
- Automatically stores the sample data
- Accumulates the radiation measurement data
- Calibration every five years
- Design is compact and anti-impact, easy to carry
- Ergonomically designed with a comfortable hand feel
- USB port connecting to computer and available to analyze software with many functions
- Transmits current data displayed and analyzed in real-time on computer
- Large high definition LCD display easy to read

Specifications

Types of measured Ray	α 、 β 、 γ and X ray
Range	Radiation dose rate: 0.01 μ Sv/h-1000 μ Sv/h Impulse dose rate: 0-30,000cpm,0-5,000cps Radiation dose accumulation: 0.001 μ Sv-999999Sv Impulse dose accumulation: 0-999999
Sensitivity	108pcs impulse or 1000 cpm/mR/hr in Cobalt-60 radial environment with power of 1 μ Sv/h Alpha ray: from 4 MeV Beta ray: from 0.2 MeV Gamma ray: from 0.02 MeV X ray: from 0.02 MeV
Ray selection switch	α β γ X rays selection
Sensor	Halogen filled detector
Output port	USB Port (with special USB extendable cable to opt which can extend to 100M)
Average time	Default: 32 seconds, adjustable from 2s to 120s automatically or manually
Display	6-digit Large display (LCD) numeric with all inspection data with bar chart: Radiation dose rate, impulse rate, Radiation dose accumulation, impulse dose accumulation, time date, alarming value, standard calibration factor, max. radiation dose rate
Calibration	Calibration factor adjustable directly
Alarm	Alarming value settable freely default: 5 μ Sv/hr
Accuracy	<15%
Storage	storing two thousand data points manually or automatically
Software	Transmit data in real-time to computer for display analyzing and recording.
Working temperature of detector	-40 $^{\circ}$ C to 75 $^{\circ}$ C
Weight	250g
Dimension	L 170 mm W 74 mm H 30 mm
Power	3 AAA batteries to work 30 days consecutively
Quality certificate	European CE,US FCC15
Warranty	1 year



Dada is transmitted in real-time to computer for display and analyzing.

Option:

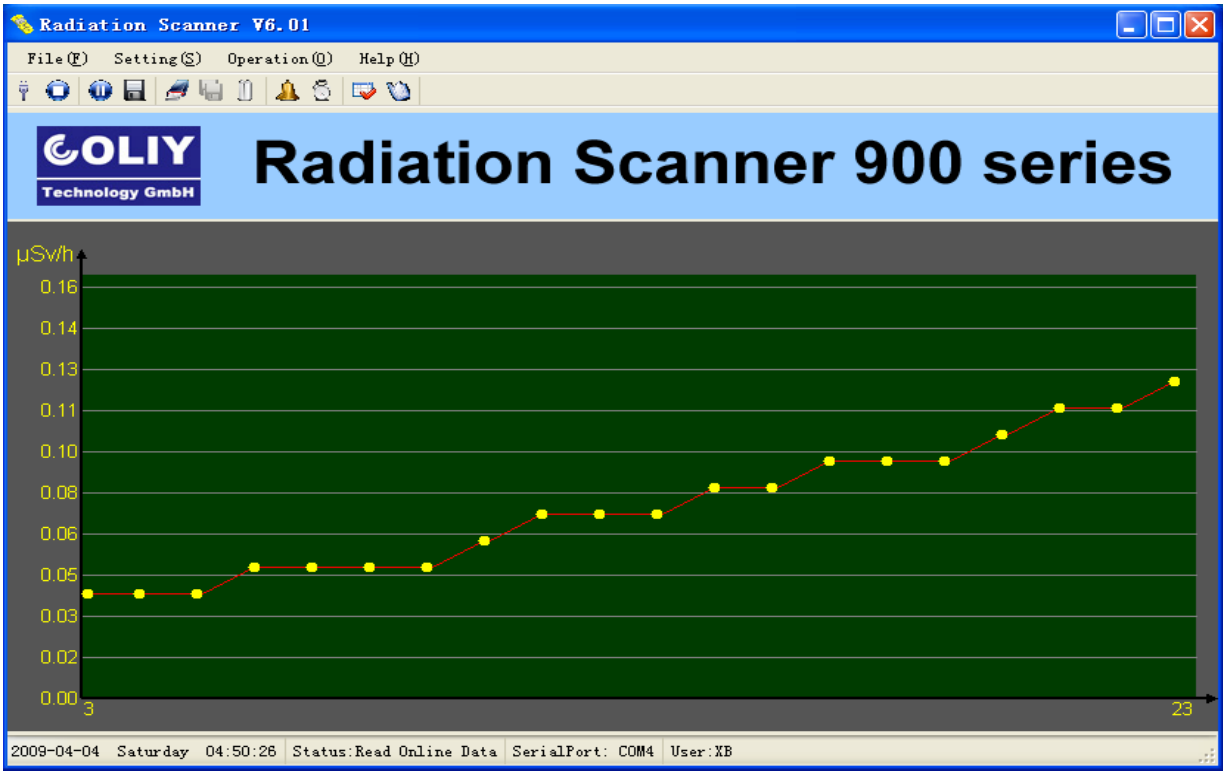
5 M USB cable.

USB extender with 50 meter cable

USB extender with 100 meter cable



Software



Software

Radiation Scanner

